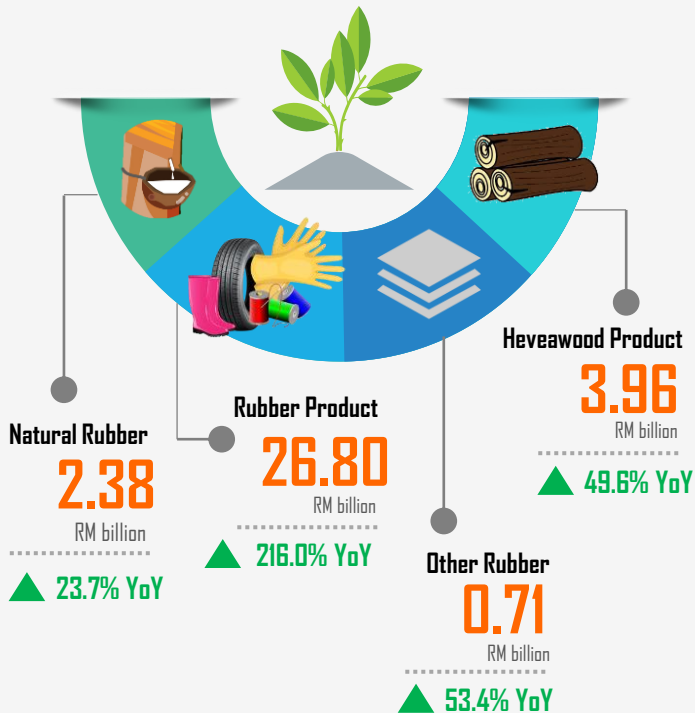




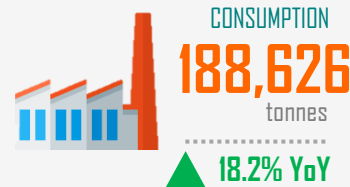
RUBBER INDUSTRY'S CONTRIBUTION

In January – April 2021, rubber industry has contributed RM33.85 billion, increased 150.5% year-on-year. The value represents 8.7% of the total national exports which valued at RM 387.81 billion. The industry's contribution breakdown is as follows:

Total Industry Exports: **RM 33.85 Billion**
▲ 150.5% YoY



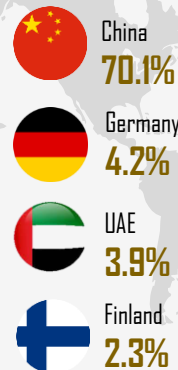
NATURAL RUBBER



EXPORTS

374,717
tonnes
▲ 14.3% YoY

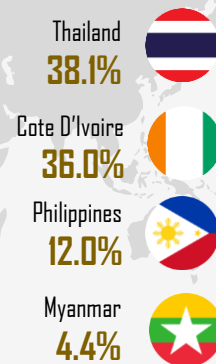
Major Export Destinations:



IMPORTS

462,970
tonnes
▲ 3.4% YoY

Major Import Source:



AVERAGE PRICE (sen/kg)

Farmgate Latex
680.84
▲ 45.7% YoY

FOB Latex Bulk
614.71
▲ 39.4% YoY



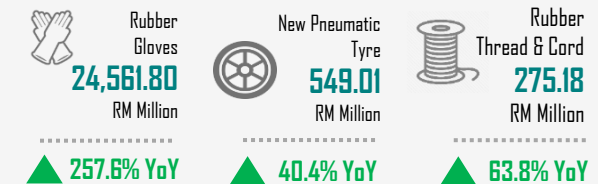
Farmgate Cuplump
532.09
▲ 34.4% YoY

FOB SMR 20
671.10
▲ 26.3% YoY

RUBBER PRODUCTS

Exports : **RM 26.80 Billion** ▲ 216.0% YoY

Major Export Items:



Imports : **RM 2.83 Billion** ▲ 39.7% YoY

Major Import Items:

